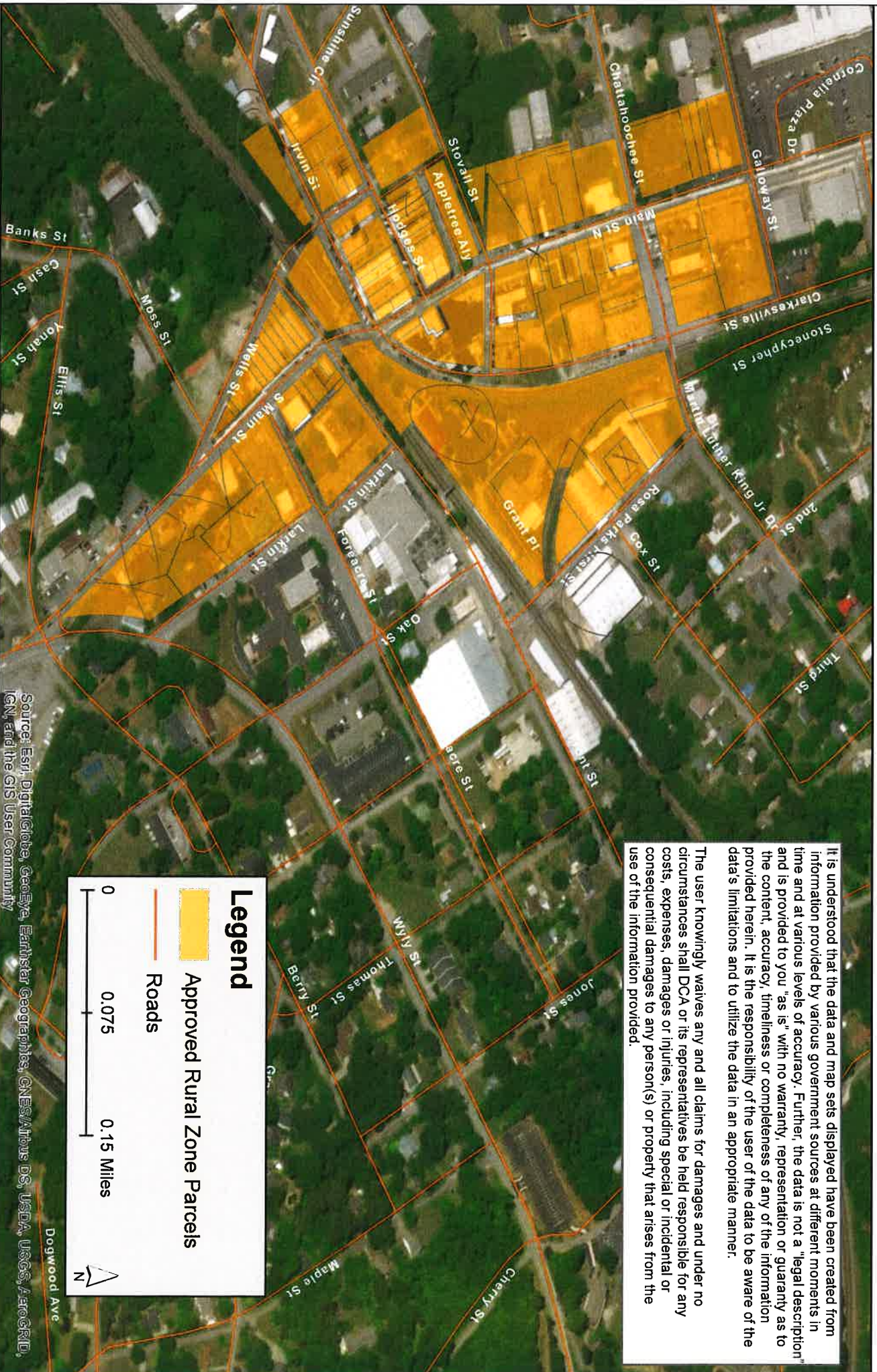


# Official Rural Zone map for City of Cornelia




It is understood that the data and map sets displayed have been created from information provided by various government sources at different moments in time and at various levels of accuracy. Further, the data is not a "legal description" and is provided to you "as is" with no warranty, representation or guaranty as to the content, accuracy, timeliness or completeness of any of the information provided herein. It is the responsibility of the user of the data to be aware of the data's limitations and to utilize the data in an appropriate manner.

The user knowingly waives any and all claims for damages and under no circumstances shall DCA or its representatives be held responsible for any costs, expenses, damages or injuries, including special or incidental or consequential damages to any person(s) or property that arises from the use of the information provided.

**Legend**

- Approved Rural Zone Parcels
- Roads

0      0.075      0.15 Miles



Source: Esri, DigitalGlobe, GeoEye, Earthstar Geographics, CNES/Airbus DS, USDA, USGS, AeroGRID, IGN, and the GIS User Community

Data Source: Shapefiles from City of Cornelia - GIS, December 2017  
 Map Prepared by: Georgia Department of Community Affairs, 2018  
 Approved: January 1st, 2018  
 Expires: December 31st, 2022